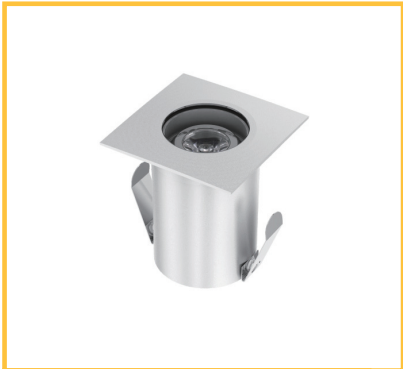




CREO Light.  
Light years ahead.



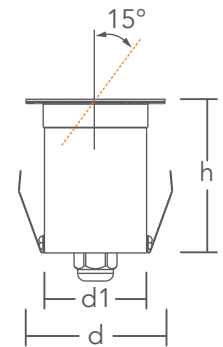
**Inground Light  
Focal-S 2W 24V IP65**

## PRODUCT HIGHLIGHTS

- ~ Recessed fitting for ground installation for outdoor and indoor use
- ~ High brightness LED light with consistent colour temperature and high CRI
- ~ Long service lifetime of 50'000 hours
- ~ Cover made of stainless steel "316L". Body made of anodized aluminium
- ~ External 24V DC constant voltage LED driver required (not included)
- ~ 8 mm tempered glass enables drive over with maximum load of 1'000 Kg
- ~ 4'000K version available upon request. Frosted cover glass is optional
- ~ No UV or IR emissions. No mercury

## GENERAL CHARACTERISTICS

Product Name	LD GL FOCAL-S 2W 24V IP65
Energy Efficiency Label	A
Materials	Body Anodized Aluminium Diffuser Tempered Glass Cover Stainless Steel "316L"
LED Type	CREE™
LED Quantity	1
Average Lifetime	50'000 hours
Start Time from 0% to 100%	0 sec
Mercury Content	0.0 mg
Ingress Protection	IP65
Dimensions (d x h; d1)	55 x 70 mm; Ø 41 mm
Weight	180 g



## ELECTRICAL CHARACTERISTICS

System Power	2W
Forward Voltage	24V DC

## LIGHT CHARACTERISTICS

Product Reference	GL FOCAL-S 2W/SP/830			GL FOCAL-S 2W/FL/830			GL FOCAL-S 2W/WFL/830		
Luminous Flux	120 lm			120 lm			120 lm		
Luminous Intensity	1'092 cd			551 cd			249 cd		
Luminous Efficiency	60 lm/W			60 lm/W			60 lm/W		
Beam Angle	15°			25°			40°		
Colour Name	Warm White			Warm White			Warm White		
Colour Temperature (CCT)	3'000 K			3'000 K			3'000 K		
CRI	83			83			83		
	DISTANCE (m)	CONE DIAMETER (m)	ILLUMINANCE (lx)	DISTANCE (m)	CONE DIAMETER (m)	ILLUMINANCE (lx)	DISTANCE (m)	CONE DIAMETER (m)	ILLUMINANCE (lx)
	2.5	0.78	175	2.5	1.08	88	2.5	1.83	40
	2.0	0.52	273	2.0	0.86	138	2.0	1.46	62
	1.5	0.39	486	1.5	0.65	245	1.5	1.10	111
	1.0	0.26	1'092	1.0	0.43	551	1.0	0.73	249
	0.5	0.13	4'368	0.5	0.22	2'204	0.5	0.37	996