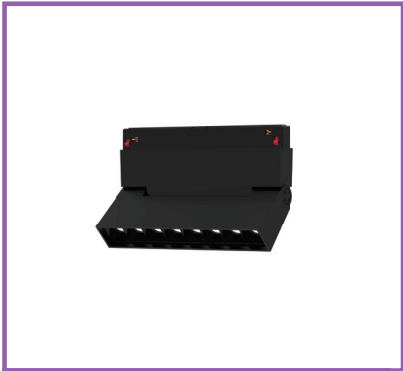




CREO Light.
Light years ahead.



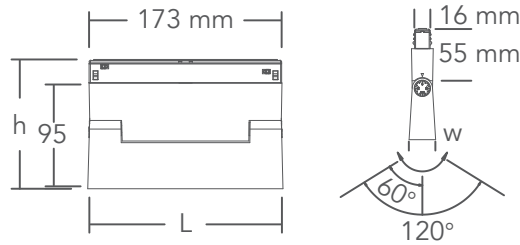
**Infinite Track Tilttable
Low Glare 13W IP20**

PRODUCT HIGHLIGHTS

- ~ Tilttable LED low glare fixture for 48V track system
- ~ Colour temperature: 3'000K. Available upon request: 2'700K, and 4'000K
- ~ Excellent Colour Consistency and high CRI (CRI > 95)
- ~ High-quality aluminium LED linear track light providing symmetric light with maximum luminaire efficiency and optimum photometric properties
- ~ Fixed output LED driver is included with plug & play connection. Dimmable (DALI or 1-10V) driver available upon request
- ~ Available in white or black
- ~ Smart mechanical design allowing precise tilt angle adjustment up to 120°

GENERAL CHARACTERISTICS

Product Name	Infinite Track Tilttable Low Glare
LED Type	SMD
Materials	Body Aluminium finish
Dimensions (L x w x h)	176 x 28 x 116 mm
Ingress Protection	IP20



ELECTRICAL & LIGHT CHARACTERISTICS

Product Reference	ITLGA1812SP930□	ITLGA1812FL930□	ITLGA1812WF930□	ITLGA18122X48930□
Rated Power	13 W	13 W	13 W	13 W
Forward Current	500 mA	500 mA	500 mA	500 mA
Forward Voltage	38 V	38 V	38 V	38 V
Luminous Flux	1'350 lm	1'350 lm	1'350 lm	1'350 lm
Luminous Efficiency	104 m/W	104 m/W	104 m/W	104 m/W
Luminous Intensity	8'226 cd	3'410 cd	1'129 cd	3'993 cd
Beam Angle	15°	35°	50°	20° x 40°
Colour Name	Warm White	Warm White	Warm White	Warm White
Colour Temperature (CCT)	3'000 K	3'000 K	3'000 K	3'000 K
CRI	> 95	> 95	> 95	> 95

DISTANCE (m)	CONE DIAMETER (m)	ILLUMINANCE (lx)	DISTANCE (m)	CONE DIAMETER (m)	ILLUMINANCE (lx)	DISTANCE (m)	CONE DIAMETER (m)	ILLUMINANCE (lx)	DISTANCE (m)	CONE DIAMETER (m)	ILLUMINANCE (lx)
1.0	0.30	8'226	1.0	0.53	3'410	1.0	1.05	1'129	1.0	0.35	3'993
2.0	0.59	2'057	2.0	1.07	853	2.0	2.09	282	2.0	0.70	998
3.0	0.89	914	3.0	1.60	379	3.0	3.14	125	3.0	1.05	444
4.0	1.18	514	4.0	2.13	213	4.0	4.19	71	4.0	1.40	250
5.0	1.48	329	5.0	2.67	136	5.0	5.23	45	5.0	1.75	160

When ordering, please complete the product reference:

□ : Main Frame: W= White / B= Black / 0= Customized RAL